

# australian style

ISSN 1322-9559



\$8.95 INC GST NZ \$10.75

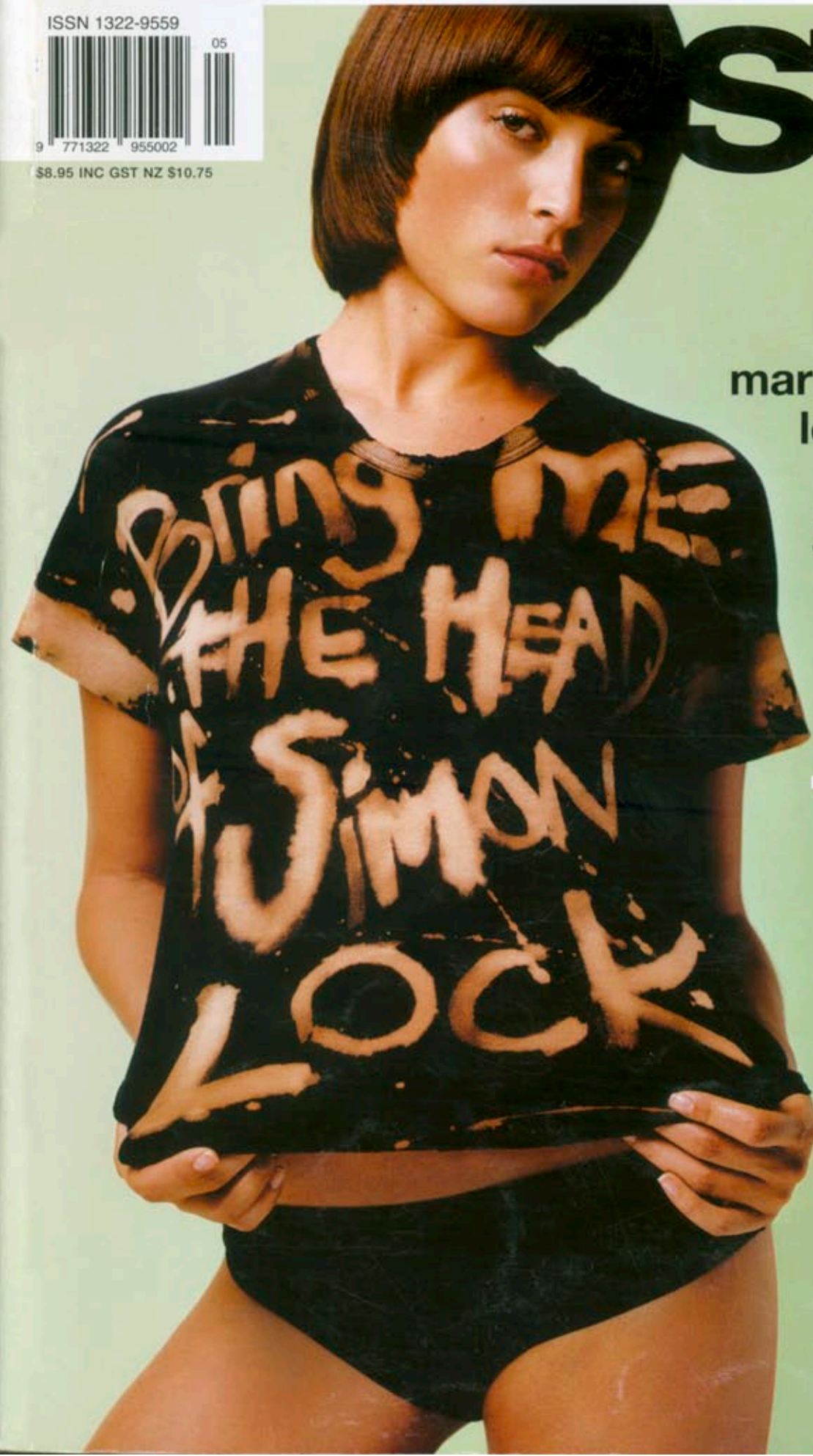
NUMBER 62 MAY 02

simon lock talks  
marion hume's moments  
london fashion report  
the new star wars  
jimmy barnes reborn  
the A-Z of art

the  
fashion  
issue

50

pages of the best  
australian and  
international fashion



## design classic #1

The enduring image of the modern 1950s Australian home features a webbed armchair and an ottoman. Architect Douglas Snelling introduced the webbed chair to Australia in the late 1940s and it has since risen to the status of Aussie icon. Design-savvy Australians continue to furnish their interiors with the original Snelling line, and there's a good chance such items have been reconditioned at a Sydney based workshop called Sprintwood. In fact Sprintwood revitalises so many of the chairs that they are now being re-released under the original manufacturer, Functional Products. Currently available are the armchair, armless armchair, ottoman, dining chair and table.

Functional Products 02 9700 7090



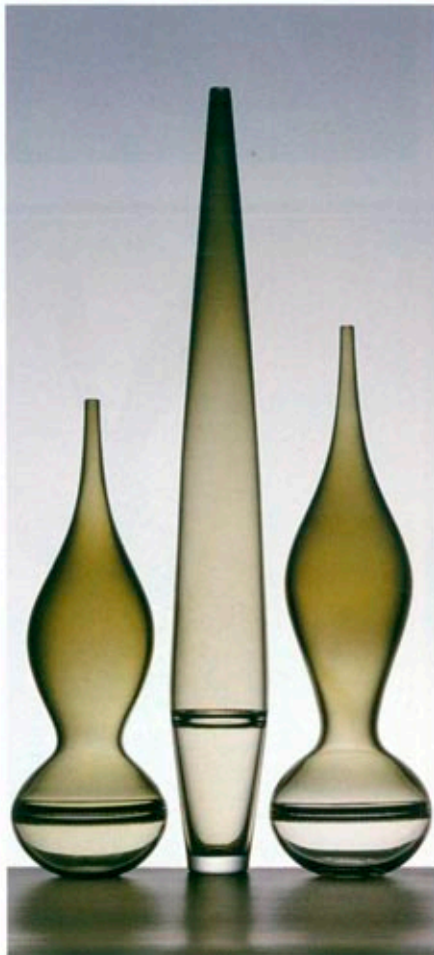
## luminous

Andrew Lavery is an accomplished yet unassuming young glass artist, which is just the way we Aussies like our over-achievers – saves us having to cut their inflated egos down to size (excepting sportspeople, of course).

Lavery's glass vessels and objects are resplendent in a spectrum of colours ranging from bright to subtle to smoky. The relationship between the interior and exterior space of the vessels as well as the optical qualities of folded glass provide the impetus for his designs, while inspiration for the forms comes from some of the best modernist design.

Grouped together, the glass objects emulate the profile of futuristic city skylines.

Andrew Lavery glass  
02 9351 1077



## out of the doghouse

It's official. Some Sydney apartment blocks are allowing residents to have pets. Dreaded body corporate regimes and developers have finally decided to stop ostracising pet owners and let them prove they can take responsibility for their four-legged friends. This makes perfect timing for the release of a new doghouse from Magis that would look very cool on the terrace of any inner-city dwelling. The kennel is made of moulded polyethylene, features an air chamber between the double walls to allow thermal insulation (so pooch won't suffer from temperature extremes) and is elevated from the ground to avoid flooding. A stepladder grants easy access for our smaller friends, while a brass plaque over the entrance reads *Amicus fidelis protectio fortis* (that's Latin for "faithful friend strong protector").

Magis doghouse, ECC lighting + living, Sydney 02 9380 7922

